

# Analysis Of Healthcare Services Quality in Naval Hospital Dr. Ramelan using Servqual-Fuzzy Method

*By* Adi Bandono

## ANALYSIS OF HEALTHCARE SERVICES QUALITY IN NAVAL HOSPITAL DR.RAMELAN USING SERVQUAL - FUZZY METHOD

Riono<sup>1</sup>, Ikhwan Syahtaria<sup>1</sup>, Adi Bandonono<sup>1</sup>

36

<sup>1</sup> Indonesian Naval Technology College,  
Bumimoro-Morokrempangan, Surabaya 60187, Indonesia

### ABSTRACT

Service Quality is a very important concept that must be understood if the company wants to remain competitive and evolving. Quality of service in hospitals should be directed to patient satisfaction, it is to maintain patient loyalty. With the development of business competition, it is important to make health care providers improving their service qualities. Customer satisfaction is an important key to service quality management. from the initial sampling, obtained the data of customer dissatisfaction in Dr.Ramelan hospital by 41.47%. It is necessary to do research to determine the cause of this customer dissatisfaction. The purpose of this research is to identify the gap between perception and expectation of customer to health service at inpatient unit of Dr.Ramelan hospital. This paper used servqual method which was integrated with fuzzy method. Based on the results of this study, it was showed that the attributes of X<sub>5</sub> (bathroom hygiene and clean water availability) had the greatest gap of 25 health service attributes identified at the Dr.Ramelan hospital, with gap score -0,0433. The second on attribute X<sub>18</sub> (The availability of doctors and nurses at the time of patient need) with a gap score of -0,0364. And the third on attribute X<sub>10</sub> (Fast, accurate examination, treatment and treatment services) with a gap score of -0,0354. Based on the results of this paper, it could be concluded that the results could assist the management of the hospital in determining the policy strategy by prioritizing attributes that have a big gap to improve the quality of its services.

**KEYWORD** : Service quality, fuzzy, Health care.

### 1. INTRODUCTION

One of the important concepts in management and business is service quality. Service quality is a very important concepts that companies must understand if they want to remain competitive and evolving. Service quality becomes increasingly important for today's business, particularly in high-customer involvement industries such as healthcare services (Punnakitikashem, et al., 2012). Health care service providers should disseminate correct information from time to time as more quality information leads to patient awareness and satisfaction (Dave & Dave, 2014). Service quality in hospitals should be directed towards the satisfaction of patients (Rafidah, et al., 2016). Service quality and customer satisfaction have

been recognized as the main preserve of customer loyalty (Anderson & Mittal, 2000).

With the development of business competition, it is important to make health care providers improving their service qualities. Customer satisfaction is an important key to service quality management. from the initial sampling, obtained the data of customer dissatisfaction in Dr.Ramelan hospital by 41.47%. it is necessary to do research to determine the cause of this customer dissatisfaction. This research is to analyze how the quality of health service in inpatient unit of Dr.ramelan Surabaya hospital. Based on the results of this study, it could be conclude that it can assist the management of the hospital in determining the policy setrategy by

prioritizing attributes that have a big gap to improve the quality of its services.

The purpose of this paper was to identify the gaps between customer expectations of a service and their perceptions of service at Dr. Ramelan hospital, particularly in inpatient units. This paper used a Servqual approach that was integrated with the fuzzy method to gain a gap between the perceptions and expectations of consumers. This approach had been used extensively to assess the quality of private sector services, but there was little application to public services (Munhurrin, et al., 2010).

This paper had many literature to support the research, for example paper titled "A Conceptual Model of Service Quality and Its Implications for Future Research" (Parasuraman, et al., 1985) and other research such as SERVQUAL : A Multiple-Item Scale for Measuring Consumer Perceptions of Service Quality (Parasuraman, et al., 1988). Five Imperatives for Improving Service Quality (Parasuraman, et al., 1990). Health Care Service Quality: Case Example of a Hospital with Lean Implementation (Punnakitkashem, et al., 2012). A study on Service quality and customer satisfaction of selected Private hospitals of Vadodara City (Dave & Dave, 2014). Service Quality and Determinants Of Customer Satisfaction In Hospitals: Turkish Experience (Zaim, et al., 2010). A Comparative Study of Service Quality on Patient Satisfaction Between Public Hospital in Johor Bahru (Rafidah, et al., 2016). Impact of Service Quality on Customers' Satisfaction (Bharwana, et al., 2013). Essentials for improving service quality in cancer care (Berrya & Mate, 2016). A Review on Dimensions of Service Quality Models (Yarimoglu, 2014). Service Quality in the Public Service (Munhurrin, et al., 2010).

The other literature supporting this paper was Measuring Consumer Satisfaction in Healthcare

Sectore : The Applicability of Servqual (Chakraborty & Majumdar, 2011). The Dimensions of Service Quality for Hospital (Duffy, et al., 2001). Factors influencing healthcare service quality (Mosadeghrad, 2014). Hospital Service Quality and its Effect on Patient Satisfaction and Behavioural Intention (Amin & Nasharuddin, 2013). The Assessment of Perceived Service Quality of Public Health Care Services in Romania Using the SERVQUAL Scale (Lorin, et al., 2013). SERVQUAL: Measuring higher education service quality in Thailand (Yousapronpaiboon, 2014). Service quality assessment in health care sector: the case of Durres public hospital (Kalaja, et al., 2016). Assessing Obstetrics Perceived Service Quality at a Public Hospital (Martins, et al., 2015). (Lowrie, et al., 2015)

The results of this study can be used by the management of the hospital as a material consideration in determining the policy strategy to improve the quality of service. This paper was organized as follows. Section 1 is Introduction. Section 2 is about Material and Methodology. Section 3 is result and discussion of the research. Finally, in section 5 presents conclusion of this paper.

## 2. MATERIALS AND METHODOLOGY

### 2.1. Service Quality

The first is that customers are the sole judge of service quality. Customers assess service by comparing the service they receive (perceptions) with the service they desire (expectations) (Parasuraman, et al., 1990). Majority of research pertaining to service quality has focused on the measurement of service quality based on the functional dimension (James & Kang, 2004). The techniques of measuring service quality and service quality dimensions have become a major area in marketing literature during the past few decades (Yarimoglu, 2014).

Service quality is identified into ten dimensions, which the customer uses to evaluate the service quality. They are reliability, responsiveness, competence, access, courtesy, communication, credibility, security, understanding/knowing the customer, and tangibles (Parasuraman, et al., 1985). Thus, Servqual is developed from a modification of ten dimensions to five principal dimensions customers, which are tangibles, reliability, responsiveness, assurance and empathy (Parasuraman, et al., 1990). The instrument in servqual is summarized in five dimensions called service quality model (The Gaps Models). Service Quality Model is a model that can analyze the gap between two main variables, the services expected by the customers (expectation) and services they receive (perception) (fig.1)

(Parasuraman, et al., 1985)

## 2.2. Fuzzy

Generally, the fuzzy set is an extension of the crisp set, the set that divides a group of individuals into two categories, namely members and non-members (Rose, et al., 2004). Fuzzy number is a special fuzzy set  $F = \{(x, \mu_F(x)), x \in R\}$  where  $x$  where  $x$  is the values that lie on the line of real numbers.  $R^1$ ;  $-\infty < x < +\infty$   $R : 1$  and  $\mu_F$  is a continuous mapping of  $R^1$  into the closed interval  $[0, 1]$  (Chan, et al., 1999). Fuzzy number is used to describe non-precise numerical concepts. A triangular fuzzy number (TFN), expressed by  $M = (a, b, c)$ , where  $a < b < c$ , is a special fuzzy number and has the following type triangular membership function (Zadeh, 1965):

$$\mu_M(x) = \begin{cases} 0, & \text{if } x \leq a \\ (x-a)/(u-a), & \text{if } a < x \leq u \\ (x-b)/(u-b), & \text{if } u < x \leq b \\ 0, & \text{if } x \geq b \end{cases} \quad (1)$$

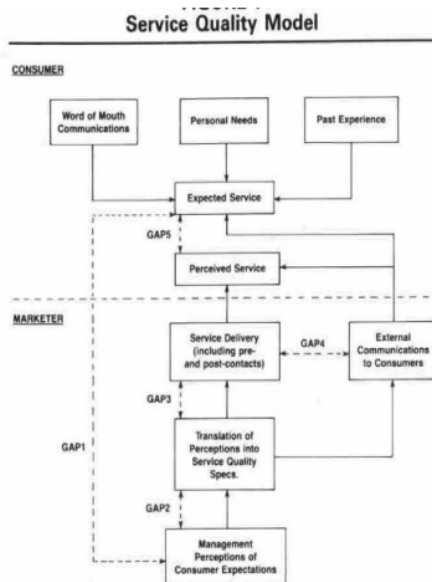


Fig 1. Service Quality Model

### 2.3. Methodology of Research

The methodology of this research is described as follows:

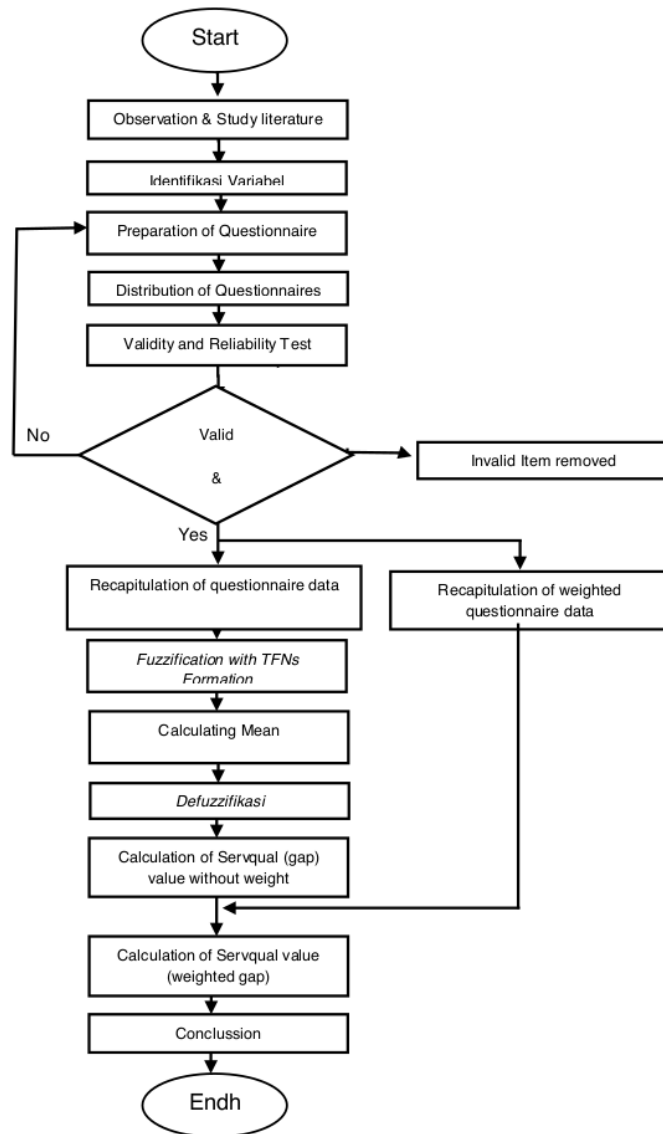


Fig 2. Flowchart of the research

The stages of this research were data collection, validity and reliability test, fuzzyfication, calculation of mean value, defuzzyfication, calculation of servqual value without weight, calculation of weight of each variable, calculation of weighted servqual value. The stage of data collection in this study was performed to identify the

attributes of health services, preparation of questionnaire, and distribute the questionnaire to the respondents. Respondents used in this research were patient or family of patient in Dr.Ramelan hospital, especially in inpatient units In this research, a total amount of 25 attributes of

health services had been identified to be assessed by the respondents, such attributes were:

**Table.1** Attribute of health services

Tangibles	(X <sub>1</sub> )	Convenient to Inpatient unit location
	(X <sub>2</sub> )	Cleanliness, tidiness and comfort of the bedroom
	(X <sub>3</sub> )	lighting and bedroom ventilation
	(X <sub>4</sub> )	completeness of bedroom facilities
	(X <sub>5</sub> )	Cleanliness of the bathroom and availability of clean water
	(X <sub>6</sub> )	The availability of medication required by the patient
	(X <sub>7</sub> )	Completeness, readiness and cleanliness of medical devices used
	(X <sub>8</sub> )	Neatness and cleanliness of the appearance of doctors and nurses
	(X <sub>9</sub> )	Taste and variety of food menu served
reliability	(X <sub>10</sub> )	Fast, accurate examination, treatment and treatment services
	(X <sub>11</sub> )	The patient's examination schedule is performed appropriately
	(X <sub>12</sub> )	The service procedure is not complicated
	(X <sub>13</sub> )	easy to contact the hospital staff
responsiveness	(X <sub>14</sub> )	The nurse's alertness when the patient needs help
	(X <sub>15</sub> )	The ability of doctors and nurses to resolve patient complaints
	(X <sub>16</sub> )	Doctors and nurses provide a clear and understandable information
assurance	(X <sub>17</sub> )	Attention to patients who need service
	(X <sub>18</sub> )	The availability of doctors and nurses at the time of patient need
	(X <sub>19</sub> )	The ability of doctors to analyze the disease
	(X <sub>20</sub> )	The accuracy of the medical team handles the patient
empathy	(X <sub>21</sub> )	Patience of nurses in caring for patients
	(X <sub>22</sub> )	Courtesy and hospitality of nurses and doctors
	(X <sub>23</sub> )	patient easy complaint submission

	(X <sub>24</sub> )	The ability of doctors and nurses to provide moral support to patients
	(X <sub>25</sub> )	Service to all patients regardless of social status

### 3. RESULT AND DISCUSSION

#### 3.1. Result.

In this study, Likert scale was used as measuring tools in the questionnaire. Questionnaires were distributed to 98 respondents randomly at the inpatient unit of the Dr.ramelan hospital. The test validity and reliability from the

results of the questionnaire were performed with SPSS 17.0 software.

Fuzzification of respondent's data (perception and expectation) was done by changing the result of respondent appraisal (in likert scale) to form fuzzy number with formation TFN<sub>s</sub> (Triangular Fuzzy Number).

**Table. 2** fuzzyfication perception for attributes X<sub>1</sub>

Res pon den.	Atribut X1			
	Nil ai	Fuzzy		
		Low	Crisp	Upp
1	3	2	3	4
2	3	2	3	4
3	3	2	3	4
4	3	2	3	4
5	5	4	5	6
6	4	3	4	5
7	5	4	5	6
8	3	2	3	4
9	3	2	3	4
10	3	2	3	4
11	3	2	3	4
12	4	3	4	5
13	3	2	3	4
14	3	2	3	4
15	3	2	3	4
16	4	3	4	5
34	4	3	4	5
35	4	3	4	5
36	3	2	3	4
37	3	2	3	4
38	4	3	4	5
39	3	2	3	4
40	4	3	4	5
41	3	2	3	4
42	2	1	2	3
43	3	2	3	4
44	3	2	3	4
45	5	4	5	6
46	4	3	4	5
47	4	3	4	5
48	3	2	3	4
49	4	3	4	5
67	2	1	2	3
68	4	3	4	5
69	4	3	4	5
70	4	3	4	5
71	4	3	4	5
72	5	4	5	6
73	5	4	5	6
74	4	3	4	5
75	4	3	4	5
76	5	4	5	6
77	4	3	4	5
78	3	2	3	4
79	3	2	3	4
80	4	3	4	5
81	5	4	5	6
82	3	2	3	4

17	3	2	3	4	50	4	3	4	5	83	3	2	3	4
18	5	4	5	6	51	3	2	3	4	84	3	2	3	4
19	5	4	5	6	52	3	2	3	4	85	4	3	4	5
20	3	2	3	4	53	2	1	2	3	86	3	2	3	4
21	5	4	5	6	54	3	2	3	4	87	3	2	3	4
22	3	2	3	4	55	4	3	4	5	88	3	2	3	4
23	5	4	5	6	56	4	3	4	5	89	3	2	3	4
24	4	3	4	5	57	5	4	5	6	90	4	3	4	5
25	3	2	3	4	58	3	2	3	4	91	4	3	4	5
26	4	3	4	5	59	4	3	4	5	92	4	3	4	5
27	4	3	4	5	60	4	3	4	5	93	3	2	3	4
28	2	1	2	3	61	3	2	3	4	94	4	3	4	5
29	5	4	5	6	62	3	2	3	4	95	4	3	4	5
30	3	2	3	4	63	3	2	3	4	96	4	3	4	5
31	4	3	4	5	64	4	3	4	5	97	3	2	3	4
32	3	2	3	4	65	4	3	4	5	98	3	2	3	4
33	3	2	3	4	66	3	2	3	4					

After all the fuzzification results obtained in each attribute, then the average (perceptions and expectations of respondents) from each attribute

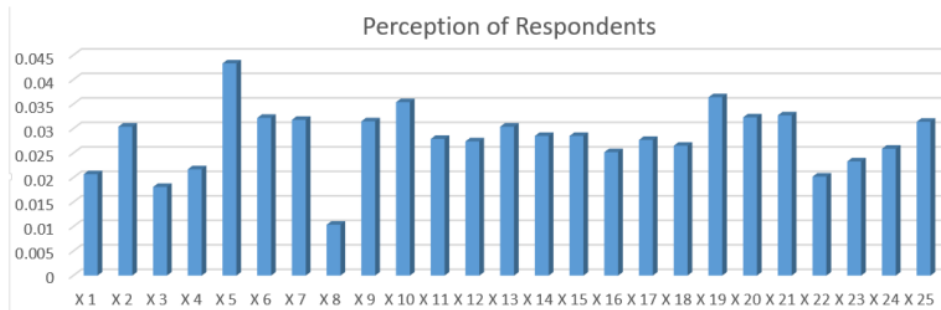
was calculated, and the defuzzification stage was subsequently performed.

**Table. 3** Mean Perceptions of Respondents (Fuzzy) and Defuzzification

Attribute	Fuzzy			Defuzzification	Attribute	Fuzzy			Defuzzification
	Low	Crisp	Upp			Low	Crisp	Upp	
X <sub>1</sub>	2.59	3.59	4.59	3.50	X <sub>14</sub>	2.87	3.87	4.87	3.78
X <sub>2</sub>	2.58	3.58	4.58	3.49	X <sub>15</sub>	2.85	3.85	4.85	3.76
X <sub>3</sub>	2.82	3.82	4.82	3.73	X <sub>16</sub>	2.79	3.79	4.79	3.70
X <sub>4</sub>	2.60	3.60	4.60	3.51	X <sub>17</sub>	2.86	3.86	4.86	3.77
X <sub>5</sub>	2.31	3.31	4.31	3.20	X <sub>18</sub>	2.73	3.73	4.73	3.64



X <sub>6</sub>	2.70	3.70	4.70	3.61	X <sub>19</sub>	2.68	3.68	4.68	3.59
X <sub>7</sub>	2.65	3.65	4.65	3.56	X <sub>20</sub>	2.88	3.88	4.88	3.79
X <sub>8</sub>	2.97	3.97	4.97	3.88	X <sub>21</sub>	2.70	3.70	4.70	3.61
X <sub>9</sub>	2.39	3.39	4.39	3.29	X <sub>22</sub>	2.94	3.94	4.94	3.85
X <sub>10</sub>	2.64	3.64	4.64	3.55	X <sub>23</sub>	2.72	3.72	4.72	3.63
X <sub>11</sub>	2.68	3.68	4.68	3.59	X <sub>24</sub>	2.68	3.68	4.68	3.59
X <sub>12</sub>	2.62	3.62	4.62	3.53	X <sub>25</sub>	2.72	3.72	4.72	3.63
X <sub>13</sub>	2.59	3.59	4.59	3.50					

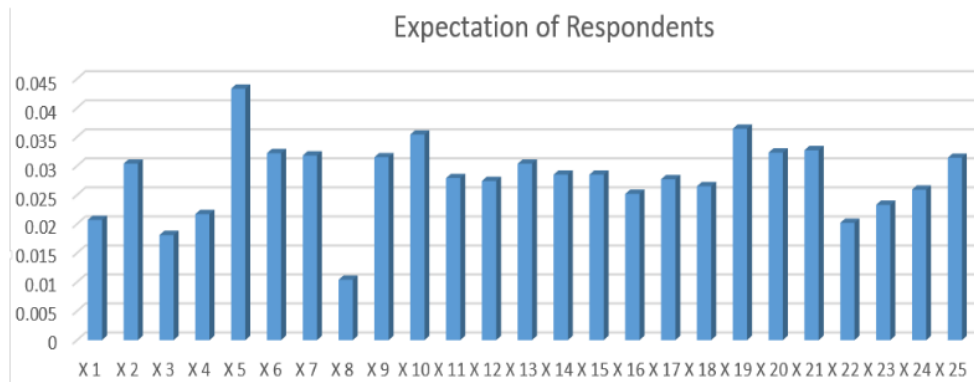


**Fig 3.** Perception of Respondents

**Table. 4** Mean Expectation of Respondents (Fuzzy) and Defuzzyfication

Attribute	Fuzzy			Defuzzyfication	Attribute	Fuzzy			Defuzzyfication
	Low	Crisp	Upp			Low	Crisp	Upp	
X <sub>1</sub>	3.16	4.16	5.16	4.08	X <sub>14</sub>	3.54	4.54	5.54	4.47
X <sub>2</sub>	3.34	4.34	5.34	4.26	X <sub>15</sub>	3.45	4.45	5.45	4.37
X <sub>3</sub>	3.29	4.29	5.29	4.21	X <sub>16</sub>	3.44	4.44	5.44	4.36
X <sub>4</sub>	3.17	4.17	5.17	4.09	X <sub>17</sub>	3.48	4.48	5.48	4.40
X <sub>5</sub>	3.40	4.40	5.40	4.32	X <sub>18</sub>	3.44	4.44	5.44	4.36
X <sub>6</sub>	3.47	4.47	5.47	4.39	X <sub>19</sub>	3.54	4.54	5.54	4.47
X <sub>7</sub>	3.41	4.41	5.41	4.33	X <sub>20</sub>	3.58	4.58	5.58	4.51
X <sub>8</sub>	3.23	4.23	5.23	4.15	X <sub>21</sub>	3.48	4.48	5.48	4.40
X <sub>9</sub>	3.27	4.27	5.27	4.19	X <sub>22</sub>	3.44	4.44	5.44	4.36

X <sub>10</sub>	3.45	4.45	5.45	4.37	X <sub>23</sub>	3.31	4.31	5.31	4.23
X <sub>11</sub>	3.36	4.36	5.36	4.28	X <sub>24</sub>	3.34	4.34	5.34	4.26
X <sub>12</sub>	3.32	4.32	5.32	4.24	X <sub>25</sub>	3.47	4.47	5.47	4.39
X <sub>13</sub>	3.35	4.35	5.35	4.27					



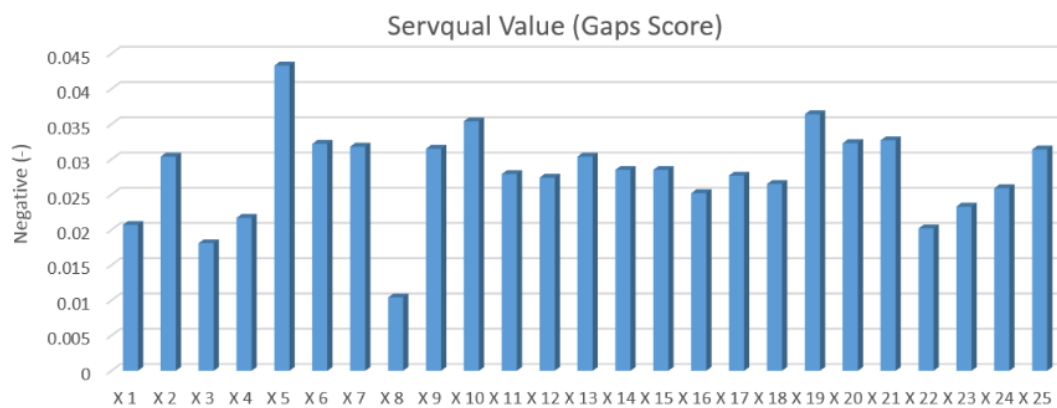
**Fig 4.** Expectation of Respondents

The next stage was the calculation of  $\text{Servqual Value (gap score)} = \text{Mean of Perception} - \text{Mean of Expectation}$  (Table 5).

**Table. 5** Servqual value (gap score) without weight

attribute	Percep tion	Expec tion	Gap score	attribute	Percep tion	Expec tion	Gap score
X <sub>1</sub>	3.50	4.08	-0.59	X <sub>14</sub>	3.78	4.47	-0.69
X <sub>2</sub>	3.49	4.26	-0.77	X <sub>15</sub>	3.76	4.37	-0.61
X <sub>3</sub>	3.73	4.21	-0.48	X <sub>16</sub>	3.70	4.36	-0.67
X <sub>4</sub>	3.51	4.09	-0.59	X <sub>17</sub>	3.77	4.40	-0.64
X <sub>5</sub>	3.20	4.32	-1.12	X <sub>18</sub>	3.64	4.36	-0.72
X <sub>6</sub>	3.61	4.39	-0.78	X <sub>19</sub>	3.59	4.47	-0.88
X <sub>7</sub>	3.56	4.33	-0.77	X <sub>20</sub>	3.79	4.51	-0.72
X <sub>8</sub>	3.88	4.15	-0.27	X <sub>21</sub>	3.61	4.40	-0.79

X <sub>9</sub>	3.29	4.19	-0.90	X <sub>22</sub>	3.85	4.36	-0.51
X <sub>10</sub>	3.55	4.37	-0.82	X <sub>23</sub>	3.63	4.23	-0.59
X <sub>11</sub>	3.59	4.28	-0.69	X <sub>24</sub>	3.59	4.26	-0.67
X <sub>12</sub>	3.53	4.24	-0.71	X <sub>25</sub>	3.63	4.39	-0.76
X <sub>13</sub>	3.50	4.27	-0.77				



**Fig 5.** Servqual value (gap score) without weight

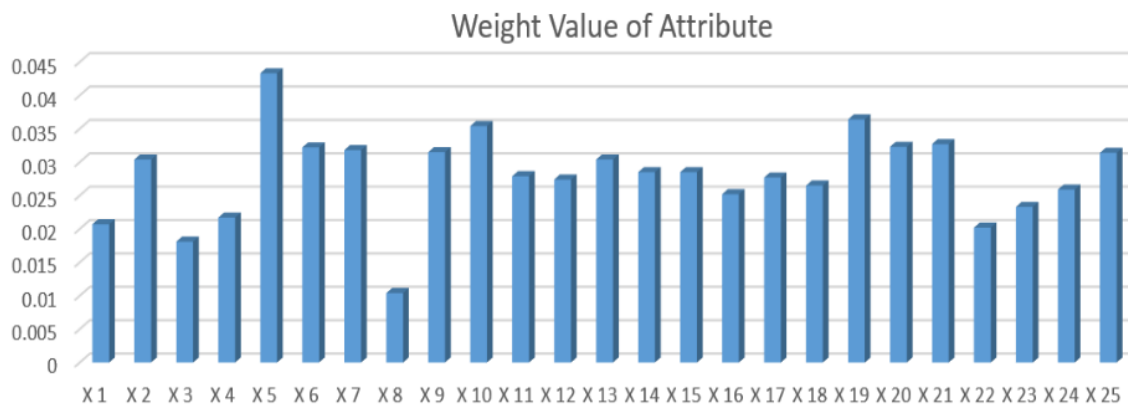
The next step after the obtained of servqual value without weight performed was the weighting of each attribute. In this study, the weighing of the attribute was performed by calculating the value average of each service quality attribute given by the respondent. Weighted questionnaires were

distributed to experts in the health sector, in this case the staff of Dr.Ramelan hospital as many as 10 respondents. Based on the distributed questionnaire data, the results of weighting each attribute were obtained as follows (Table 6):

**Table. 6** Weight value of attribute

No	Attribute	Weight	No	Attribute	Weight
1	X <sub>1</sub>	0.0350	14	X <sub>14</sub>	0.0413
2	X <sub>2</sub>	0.0395	15	X <sub>15</sub>	0.0413
3	X <sub>3</sub>	0.0377	16	X <sub>16</sub>	0.0413

4	X <sub>4</sub>	0.0368		17	X <sub>17</sub>	0.0413
5	X <sub>5</sub>	0.0386		18	X <sub>18</sub>	0.0422
6	X <sub>6</sub>	0.0413		19	X <sub>19</sub>	0.0413
7	X <sub>7</sub>	0.0413		20	X <sub>20</sub>	0.0449
8	X <sub>8</sub>	0.0386		21	X <sub>21</sub>	0.0413
9	X <sub>9</sub>	0.0350		22	X <sub>22</sub>	0.0395
10	X <sub>10</sub>	0.0431		23	X <sub>23</sub>	0.0395
11	X <sub>11</sub>	0.0404		24	X <sub>24</sub>	0.0386
12	X <sub>12</sub>	0.0386		25	X <sub>25</sub>	0.0413
13	X <sub>13</sub>	0.0395				



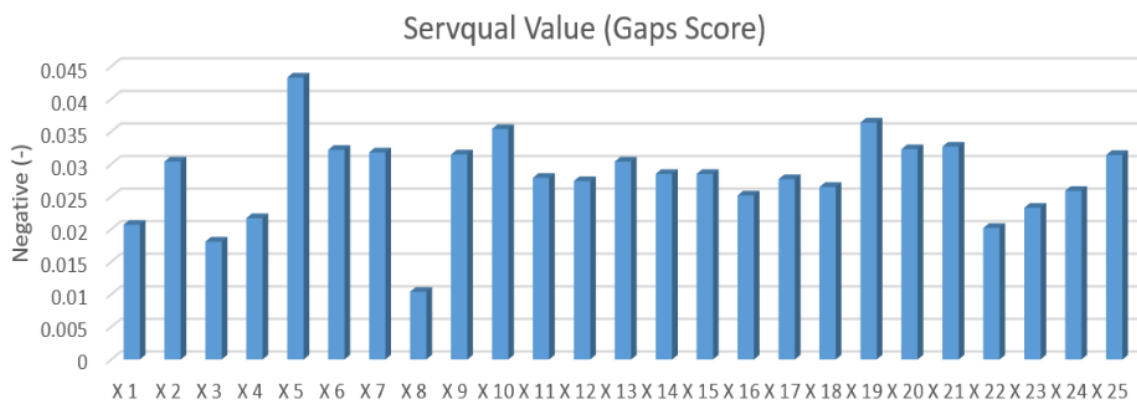
**Fig 6.** Weight value of attribute

After the result of weighting each attribute were obtained, servqual weighted value was subsequently counted by multiplying servqual value

without weight with weight value of each attribute (Table.7).

**Table. 7** Result of final Servqual value (gap score)

No	Attribute	Servqual without weight	Weight	Gap score	No	Attribute	Servqual without weight	Weight	Gap score
1	X <sub>1</sub>	-0.59	0.0350	-0.0207	14	X <sub>14</sub>	-0.69	0.0413	-0.0285
2	X <sub>2</sub>	-0.77	0.0395	-0.0304	15	X <sub>15</sub>	-0.61	0.0413	-0.0285
3	X <sub>3</sub>	-0.48	0.0377	-0.0181	16	X <sub>16</sub>	-0.67	0.0413	-0.0252
4	X <sub>4</sub>	-0.59	0.0368	-0.0217	17	X <sub>17</sub>	-0.64	0.0413	-0.0277
5	X <sub>5</sub>	-1.12	0.0386	-0.0433	18	X <sub>18</sub>	-0.72	0.0422	-0.0265
6	X <sub>6</sub>	-0.78	0.0413	-0.0322	19	X <sub>19</sub>	-0.88	0.0413	-0.0364
7	X <sub>7</sub>	-0.77	0.0413	-0.0318	20	X <sub>20</sub>	-0.72	0.0449	-0.0323
8	X <sub>8</sub>	-0.27	0.0386	-0.0104	21	X <sub>21</sub>	-0.79	0.0413	-0.0327
9	X <sub>9</sub>	-0.90	0.0350	-0.0315	22	X <sub>22</sub>	-0.51	0.0395	-0.0202
10	X <sub>10</sub>	-0.82	0.0431	-0.0354	23	X <sub>23</sub>	-0.59	0.0395	-0.0233
11	X <sub>11</sub>	-0.69	0.0404	-0.0279	24	X <sub>24</sub>	-0.67	0.0386	-0.0259
12	X <sub>12</sub>	-0.71	0.0386	-0.0274	25	X <sub>25</sub>	-0.76	0.0413	-0.0314
13	X <sub>13</sub>	-0.77	0.0395	-0.0304					



**Fig 7.** Final of Servqual value (gap score)

### 3.2. Discussion

The respondent's perception value indicated the level of service quality received by the patient during the use of health services at Dr. Ramelan hospital. Based on the average value of respondent perception, attribute X5 (Cleanliness of the bathroom and availability of clean water) had the lowest value, while the attribute X8 (Neatness and cleanliness of the appearance of doctors and nurses) had the highest value. The expectation value of the respondent showed the respondent's willingness to the quality of service that should be given by Dr. Ramelan hospital. The highest expectation value was the attribute of doctors' ability to analyze the disease (X<sub>19</sub>). Whereas the smallest expectation value was the attribute of X<sub>1</sub> (Convenient to Inpatient unit location).

The analysis of servqual without weight was performed to find out how big the gap between perception and expectation of respondent to health service in Dr. Ramelan hospital. Based on the results of this calculation, the attribute X<sub>5</sub> (Cleanliness of the bathroom and availability of clean water) had the largest gap, this showed the biggest gap between the perception and expectations of respondents to this attribute. While the smallest gap value was the attribute of Neatness and cleanliness of the appearance of doctors and nurses (X<sub>8</sub>).

From the weighting of each attribute by the hospital management, the highest value of weight on attribute X<sub>19</sub> (The ability of doctors to analyze the disease) was obtained. While the lowest weight value was in the Convenient to Inpatient unit location (X<sub>1</sub>) attribute. In the final result, a weighted servqual value with the highest gap was obtained in the attribute of Cleanliness of the bathroom and availability of clean water (X<sub>5</sub>) with a score of -0,0433, The availability of doctors and nurses at the time of patient need (X<sub>18</sub>) with a score of -0,0364,

and attribute of Fast, accurate examination, treatment and treatment services (X<sub>10</sub>) with a score of -0,0354. this indicated that these attributes should be a prioritized to improve service quality.

### 4. CONCLUSION

Based on the results and discussion above, the policy strategy that can be taken by hospital management to improve the quality of service was prioritizing service quality improvement, the first on attribute X<sub>5</sub> (Cleanliness of the bathroom and availability of clean water) with a gap score of -0,0433. The second on attribute X<sub>18</sub> (The availability of doctors and nurses at the time of patient need) with a gap score of -0,0364 and the third on attribute X<sub>10</sub> (Fast, accurate examination, treatment and treatment services) with a gap score of -0,0354. Attributes these services were assessed by customers was the least quality.

### 5. REFERENCES

- AMIN, M. & NASHARUDDIN, S. Z., 2013. HOSPITAL SERVICE QUALITY AND ITS EFFECT ON PATIENT SATISFACTION AND BEHAVIOURAL INTENTION. *CLINICAL GOVERNANCE : AN INTERNATIONAL JOURNAL*, VOLUME 18 No 3, PP. 238-254.
- Anderson, E. W. & Mittal, V., 2000. Strengthening the satisfaction - profit chain. *Journal of Service Research*, Volume 3 No 2, pp. 107-120.
- Berrya, L. L. & Mate, K. S., 2016. Essentials for improving service quality in cancer care. *Healthcare*, Volume 4, pp. 312-316.
- Pharwana, T. K., Bashir, D. M. & Mohsin, M., 2013. Impact of Service Quality on Customers' Satisfaction. *International Journal of Scientific and Research Publications*, 3(5).
- Chakraborty, D. R. & Majumdar, A., 2011. Measuring Consumer Satisfaction in Healthcare

Sectore : The Applicability of Servqual. *Journal of Arts, Science & Commerce*, II(4), p. 149.

4 Dave, D. D. R. & Dave, R., 2014. A study on Service quality and customer satisfaction of selected Private hospitals of Vadodara City. *Pacific Business Review International*, 6(11).

25 Duffy, J. et al., 2001. The Dimension of Service Quality for Hospital. *Healthcare Management Review*, Volume 26, pp. 47-59.

13 James, J. & Kang, G.-D., 2004. Service quality dimensions: an examination of Gronroos's service quality model. *Managing Service Quality*, Volume 14, pp. 266-277.

6 Kalaja, R., Myshketa, R. & Scalera, F., 2016. Service quality assessment in health care sector: the case of Durres public hospital. *Procedia - Social and Behavioural Sciences*, Volume 235, pp. 557-565.

9 Lorin, V., Gheorghe, L. R. & Petrescu, C. M., 2013. The Assessment of Perceived Service Quality of Public Health Care Services in Romania Using the SERVQUAL Scale. *Procedia Economics and Finance*, Volume 6, pp. 573-585.

2 Lowrie, D. B., Li, M., Huang, C. Y. & Lu, X. C., 2015. Evaluating Patients Perception of Service Quality at Hospital in Nine Chinese Cities by use of the Servqual Scale. *Asian Pacific Journal of Tropical Biomedicine*, Volume 5 No 6, pp. 497-504.

11 Martins, A. L., Carvalho, J. C. d., Ramos, T. & Fael, J., 2015. Assessing Obstetrics Perceived Service Quality at a Public Hospital. *Procedia - Social and Behavioural Sciences*, Volume 181, pp. 414-422.

3 Mosadeghrad, A. M., 2014. Factors influencing healthcare service quality. *International Journal of Health Policy and Management*, Volume 3 No 2, pp. 77-89.

14 Munhurrin, P. R., Bhiwajee, S. D. L. & Naidoo, P., 2010. Service Quality in The Public Service.

*International Journal of Management And Marketing Research*, Volume 3 no 1.

21 Parasuraman, A., Berry, L. L. & Duke, V. A. Z., 1990. Five Imperatives for Improving Service Quality. *Sloan Management Review*, Volume 31 no 4, pp. 29-38.

Parasuraman, A., Zeithaml, V. A. & Berry, L. L., 1985. A Conceptual Model of Service Quality and Its Implications for Future Research. *Journal of Marketing*, Volume 49, pp. 41-50.

Parasuraman, A., Zeithaml, V. A. & Berry, L. L., 1988. SERVQUAL : A Multiple-Item Scale for Measuring Consumer Perceptions of Service Quality. *Journal of Retailing*, Volume 64 No 1.

8 Punnakitikashem, P., Buavaraporn, N., Maluesri, P. & Leelartapin, K., 2012. *Health Care Service Quality: Case Example of a Hospital with Lean Implementation*. Chicago, POM Journal.

5 Rafidah, A., Nurulhuda, A. & Suhaila, Y., 2016. A Comparative Study of Service Quality on Patient Satisfaction Between Public Hospital in Johor Bahru. *SCIREA Journal of Agriculture*, 1(2).

16 Yarimoglu, E. K., 2014. A Review on Dimensions of Service Quality Models. *Journal of Marketing Management*, Volume 2, pp. 79-93.

20 Yousapronpaiboon, K., 2014. SERVQUAL: Measuring higher education service quality in Thailand. *Procedia - Social and Behavioural Sciences*, Volume 116, pp. 1088-1095.

24 Zadeh, L. A., 1965. Fuzzy Sets. *Information and Control*, Volume 8, pp. 338-353.

7 Zaim, H., Bayyurt, N. & Zaim, S., 2010. Service Quality And Determinants Of Customer Satisfaction In Hospitals: Turkish Experience. *International Business & Economics Research Journal*, Volume 9 No 5.

# Analysis Of Healthcare Services Quality in Naval Hospital Dr. Ramelan using Servqual-Fuzzy Method

ORIGINALITY REPORT

# 18%

SIMILARITY INDEX

## PRIMARY SOURCES

- 1** Gyan Prakash. "Understanding service quality: insights from the literature", *Journal of Advances in Management Research*, 2019  
57 words — 1%  
Crossref
- 2** Sema Behdioğlu, Eylem Acar, Hasan Arda Burhan. "Evaluating service quality by fuzzy SERVQUAL: a case study in a physiotherapy and rehabilitation hospital", *Total Quality Management & Business Excellence*, 2017  
54 words — 1%  
Crossref
- 3** Rupal Khambhati, Hiren Patel, Satendra Kumar. "Construction and validation of public healthcare service quality model - an empirical study of Indian public healthcare facilities in digital era", *International Journal of Public Sector Performance Management*, 2020  
50 words — 1%  
Crossref
- 4** Ranjit Kumar Dehury, Janmejaya Samal, Shawnn Coutinho, Parthsarathi Dehury. "How Does the Largely Unregulated Private Health Sector Impact the Indian Mass?", *Journal of Health Management*, 2019  
42 words — 1%  
Crossref
- 5** Alka Thapa, Ramesh Raj Ghimire. "Service quality perception and patient satisfaction: evidence from private hospitals in Kathmandu", *International Research Journal of Management Science*, 2017  
36 words — 1%  
Crossref
- 6** Evangelos Psomas. "Determining the impact of service quality on citizens' satisfaction and the role of citizens'"  
36 words — 1%



demographics. The case of the Greek citizen's service centers",  
The TQM Journal, 2020

Crossref

- 
- 7** Samuel Famiyeh, Disraeli Asante-Darko, Amoako Kwarteng. "Service quality, customer satisfaction, and loyalty in the banking sector", International Journal of Quality & Reliability Management, 2018 33 words — 1%
- Crossref
- 
- 8** Nurul Izzatty Ismail, Nor Hazana Abdullah. "A Systematic Review of Patient Satisfaction on Health Information Exchange in Malaysian Public Healthcare Organizations", Journal of Physics: Conference Series, 2018 33 words — 1%
- Crossref
- 
- 9** Ahmad Ameryoun, Seyedvahid Najafi, Bayram Nejati-Zarnaqi, Seyed Omid Khalilifar, Mahdi Ajam, Ahmad Ansarimoghadam. "Factor selection for service quality evaluation: a hospital case study", International Journal of Health Care Quality Assurance, 2017 32 words — 1%
- Crossref
- 
- 10** Estelle Van Tonder, Daniël Johannes Petzer, Karlien van Zyl. "A mediated model of relationship quality factors affecting behavioural intention at a luxury motor vehicle dealership", European Business Review, 2017 30 words — 1%
- Crossref
- 
- 11** Ingy Shafei, Jan Walburg, Ahmed Taher. "Verifying alternative measures of healthcare service quality", International Journal of Health Care Quality Assurance, 2019 27 words — 1%
- Crossref
- 
- 12** Saad Ahmed Javed, Sifeng Liu, Amin Mahmoudi, Muhammad Nawaz. "Patients' satisfaction and public and private sectors' health care service quality in Pakistan: Application of grey decision analysis approaches", The International Journal of Health Planning and Management, 2019 25 words — 1%
- Crossref
- 
- 13** Tamwatin, Utid, Jirasek Trimetsoontorn, and Wannong Fongsuwan. "Ensuring customer satisfaction through
- 25 words — 1%

service quality and image management in the hospitality industry: a conceptual perspective", J for Global Business Advancement, 2015.

Crossref

---

14 Vinaysing Ramessur, Dinesh Kumar Hurreeram, Kaylasson Maistry. "Service quality framework for clinical laboratories", International Journal of Health Care Quality Assurance, 2015 24 words — 1%

Crossref

---

15 Arsalan Gharaveis, Mahshad Kazem-Zadeh. "The Role of Environmental Design in Cancer Prevention, Diagnosis, Treatment, and Survivorship: A Systematic Literature Review", HERD: Health Environments Research & Design Journal, 2018 23 words — < 1%

Crossref

---

16 Inga Lapina, Renāte Roga, Peeter Mürsepp. "Quality of higher education", International Journal of Quality and Service Sciences, 2016 21 words — < 1%

Crossref

---

17 Gi-Du Kang, Jeffrey James. "Service quality dimensions: an examination of Grönroos's service quality model", Managing Service Quality: An International Journal, 2004 21 words — < 1%

Crossref

---

18 Gregory Strydom, Michael T. Ewing, Campbell Heggen. "Time lags, non-linearity and asymmetric effects in an extended service-profit chain", European Journal of Marketing, 2020 20 words — < 1%

Crossref

---

19 Abhishek Vashishth, Ayon Chakraborty. "chapter 9 Measuring the Service Quality of Services", IGI Global, 2018 18 words — < 1%

Crossref

---

20 Annamdevula Subrahmanyam, Bellamkonda Raja Shekhar. "Where do you find loyalty in the contemporary university scene?", Journal of Applied Research in 17 words — < 1%

- 
- 21 Robert Johnston. "Chapter 2 Insights into Service Excellence", Springer Science and Business Media LLC, 2007  
16 words — < 1%  
Crossref
- 
- 22 Angelos Pantouvakis, Constantinos Chlomoudis, Athanassios Dimas. "Testing the SERVQUAL scale in the passenger port industry: a confirmatory study", Maritime Policy & Management, 2008  
16 words — < 1%  
Crossref
- 
- 23 Khanchitpol Yousapronpaiboon, William C. Johnson. "Measuring hospital out-patient service quality in Thailand", Leadership in Health Services, 2013  
15 words — < 1%  
Crossref
- 
- 24 Mohammad Ali Beheshtinia, Sedighe Omidi. "A hybrid MCDM approach for performance evaluation in the banking industry", Kybernetes, 2017  
13 words — < 1%  
Crossref
- 
- 25 Panchapakesan Padma, Chandrasekharan Rajendran, Prakash Sai Lokachari. "Service quality and its impact on customer satisfaction in Indian hospitals", Benchmarking: An International Journal, 2010  
13 words — < 1%  
Crossref
- 
- 26 Wu Lu, Latif Al-Hakim. "The Impact of Reputation, Costs, and Interactive Care on Patient Satisfaction", Research Square, 2020  
13 words — < 1%  
Crossref Posted Content
- 
- 27 Muslim Amin, Siti Zahora Nasharuddin. "Hospital service quality and its effects on patient satisfaction and behavioural intention", Clinical Governance: An International Journal, 2013  
12 words — < 1%  
Crossref
- 
- 28 Hung-Che Wu. "The effects of customer satisfaction, perceived value, corporate image and service quality on behavioral intentions

in gaming establishments", Asia Pacific Journal of Marketing and Logistics, 2014

Crossref

11 words — < 1%

29 Ana Lúcia Martins, José Crespo de Carvalho, Tânia Ramos, Joana Fael. "Assessing Obstetrics Perceived Service Quality at a Public Hospital", Procedia - Social and Behavioral Sciences, 2015

Crossref

10 words — < 1%

30 Koshak, Hussain Khalil. "The Relationship between Service Quality and Customer Satisfaction in Men's Fitness Centers in Saudi Arabia.", Concordia University Chicago, 2020

ProQuest

10 words — < 1%

31 Dadzie, Joyce. "An Evaluation of Customer Satisfaction Dimensions in the Ghanaian Banking Industry.", Walden University, 2018

ProQuest

9 words — < 1%

32 Luo, Shu-Fang, and Tzai-Zang Lee. "The Influence of Trust and Usefulness on Customer Perceptions of E-Service Quality", Social Behavior and Personality An International Journal, 2011.

Crossref

9 words — < 1%

33 Ni Luh Putu Suardini Yudhawati. "Effect Between Quality of Nursing Service on Inpatient's Loyalty and Satisfaction in dr. Soepraoen Army Hospital Malang", JOURNAL FOR RESEARCH IN PUBLIC HEALTH, 2019

Crossref

9 words — < 1%

34 Febri Endra Budi Setyawan, Stefanus Supriyanto, Feny Tunjungsari, Wa Ode Nurlaily Hanifaty, Retno Lestari. "Medical staff services quality to patients satisfaction based on SERVQUAL dimensions", International Journal of Public Health Science (IJPBS), 2019

Crossref

8 words — < 1%

35 Rafikul Islam, Selim Ahmed, Mahbubar Rahman, Ahmed Al Asheq.

"Determinants of service quality and its effect on customer satisfaction and loyalty: an empirical study of private banking sector", The TQM Journal, 2020

Crossref

8 words — < 1 %

36 Susilo Kukuh, Udisubakti Ciptomulyono, Nengah Putra, A Ahmadi, Okol Suharyo. "Navy ability development strategy using SWOT analysis-interpretative structural modeling (ISM)", Strategic Management, 2019

Crossref

8 words — < 1 %

37 "Human Interaction and Emerging Technologies", Springer Science and Business Media LLC, 2020

Crossref

7 words — < 1 %

38 Sujatha, S. Mary. "A Comparative Study on the Customer Satisfaction in Private Sector and Public Sector Banks with Reference to Chennai City.", Mother Teresa Women's University (India), 2020

ProQuest

6 words — < 1 %

39 Serkan Altuntas, Semih Kansu. "An innovative and integrated approach based on SERVQUAL, QFD and FMEA for service quality improvement", Kybernetes, 2019

Crossref

6 words — < 1 %

40 Swapnarag Swain. "Do patients really perceive better quality of service in private hospitals than public hospitals in India?", Benchmarking: An International Journal, 2019

Crossref

6 words — < 1 %

41 Dasman Lanin, Nailuredha Hermanto. "The effect of service quality toward public satisfaction and public trust on local government in Indonesia", International Journal of Social Economics, 2019

Crossref

6 words — < 1 %

EXCLUDE QUOTES

OFF

EXCLUDE MATCHES

OFF

EXCLUDE

OFF

