

Similarity Analysis of Healthcare Services Quality in Hospital “X” using Servqual - Fuzzy Method

By Sutrisno sutrisno

Analysis of Healthcare Services Quality in Hospital "X" using Servqual - Fuzzy Method

Kazan Gunawan¹, I Nengah Putra², Riono³, Adi Bandono⁴ and Sutrisno⁵

³⁹ ¹Esa Unggul University, Jakarta 11510, Indonesia.

^{2,3,4,5} Sekolah Tinggi Teknologi Angkatan Laut (STTAL), Morokrembangan, Surabaya 60187, Indonesia.

ORCID: ¹0000-0002-4124-9334, ²0000-0002-6799-691X, ³0000-0001-7196-7401,

⁴000-0002-1184-1273, ⁵000-0002-3278-6939

Abstract

Service Quality is a very important concept that must be understood if the company wants to remain competitive and evolving. Quality of service in hospitals should be directed to patient satisfaction, it is to maintain patient loyalty. With the development of business competition, it is important to make health care providers improving their service qualities. Customer satisfaction is an important key to service quality management. from the initial sampling, obtained the data of customer dissatisfaction in hospital "X" by 41.47%. It is necessary to do research to determine the cause of this customer dissatisfaction. The purpose of this research is to identify the gap between perception and expectation of customer to health service at inpatient unit of hospital "X". This paper used servqual method which was integrated with fuzzy method. Based on the results of this study, it was shown that the attributes of X₅ (bathroom hygiene and clean water availability) had the greatest gap of 25 health service attributes identified at the hospital "x", with gap score -0,0433. The second on attribute X₁₈ (The availability of doctors and nurses at the time of patient need) with a gap score of -0,0364. And the third on attribute X₁₀ (Fast, accurate examination, treatment and treatment services) with a gap score of -0,0354. Based on the results of this paper, it could be concluded that the results could assist the management of the hospital in determining the policy strategy by prioritizing attributes that have a big gap to improve the quality of its services.

Keyword: Service quality, fuzzy, Healthcare.

INTRODUCTION

One of the important concepts in management and business is service quality. Service quality is a very important concept that companies must understand if they want to remain competitive and evolving. Service quality becomes increasingly important for today's business, particularly in high-customer involvement industries such as healthcare services (Punnakitikashem, et al., 2012). Health care service providers should disseminate correct information from time to time as more quality information leads to patient awareness and satisfaction (Dave & Dave, 2014). Service quality in hospitals should be directed towards

the satisfaction of patients (Rafidah, et al., 2016). Service quality and customer satisfaction have been recognized as the main preserve of customer loyalty (Anderson & Mittal, 2000).

With the development of business competition, it is important to make health care providers improving their service qualities. Customer satisfaction is an important key to service quality management. from the initial sampling, obtained the data of customer dissatisfaction in hospital "X" by 41.47%. it is necessary to do research to determine the cause of this customer dissatisfaction. This research is to analyze how the quality of health service in inpatient unit of hospital "X" Surabaya. Based on the results of this study, it could be concluded that it can assist the management of the hospital in determining the policy strategy by prioritizing attributes that have a big gap to improve the quality of its services.

The purpose of this paper was to identify the gaps between customer expectations of a service and their perceptions of service at hospital "X", particularly in inpatient units. This paper used a Servqual approach that was integrated with the fuzzy method to gain a gap between the perceptions and expectations consumers. This approach had been used extensively to assess the quality of private sector services, but there was little application to public services (Munhurrin, et al., 2010).

This paper had many literature to support the research, for example paper titled "A Conceptual Model of Service Quality and Its Implications for Future Research" (Parasuraman, et al., 1985) and other research such as SERVQUAL : A Multiple-Item Scale for Measuring Consumer Perceptions of Service Quality (Parasuraman, et al., 1988). Five Imperatives for Improving Service Quality (Parasuraman, et al., 1990). Health Care Service Quality: Case Example of a Hospital with Lean Implementation (Punnakitikashem, et al., 2012). A study on Service quality and customer satisfaction of selected private hospitals of Vadodara City (Dave & Dave, 2014). Service Quality and Determinants Of Customer Satisfaction in Hospitals: Turkish Experience (Zaim, et al., 2010). A Comparative Study of Service Quality on Patient Satisfaction between Public Hospital in Johor Bahru (Rafidah, et al., 2016). Impact of Service Quality on Customers' Satisfaction (Bharwana, et al., 2013). Essentials for improving service

quality in cancer care (Berry & Mate, 2016). A Review of Dimensions of Service Quality Models (Yarimoglu, 2014). Service Quality in the Public Service (Munhurrin, et al., 2010).

The other literature supporting this paper was Measuring Consumer Satisfaction in Healthcare Sector: The Applicability of SERVQUAL (Chakraborty & Majumdar, 2011). The Dimensions of Service Quality for Hospital (Duffy, et al., 2001). Factors influencing healthcare service quality (Mosadeghrad, 2014). Hospital Service Quality and its Effect on Patient Satisfaction and Behavioural Intention (Amin & Nasharuddin, 2013). The Assessment of Perceived Service Quality of Public Health Care Services in Romania Using the SERVQUAL Scale (Lorin, et al., 2013). SERVQUAL: Measuring higher education service quality in Thailand (Yousapornpaiboon, 2014). Service quality assessment in health care services: the case of Durres' public hospital (Kalaja, et al., 2016). Assessing Observed Perceived Service Quality at a Public Hospital (Martins, et al., 2015). (Lowrie, et al., 2015)

The results of this study can be used by the management of the hospital as a material consideration in determining the policy strategy to improve the quality of service. This paper was organized as follows. Section 1 is Introduction. Section 2 is about Material and Methodology. Section 3 is the result discussion of the research. Finally, in section 5 presents the conclusion of this paper.

MATERIALS AND METHODOLOGY

Service Quality

The first is that customers are the sole judge of service quality. Customers assess service by comparing the service they receive (perceptions) with the service they desire (expectations) (Parasuraman, et al., 1990). Majority of research pertaining to service quality has focused on the measurement of service quality based on the functional dimension (James & Kang, 2004). The techniques of measuring service quality and service quality dimensions have become a major area of marketing literature during the past few decades (Yarimoglu, 2014).

Service quality is identified into ten dimensions, which the consumer uses to evaluate the service quality. They are reliability, responsiveness, competence, access, courtesy, communication, credibility, security, understanding/knowing the customer, and tangibles (Parasuraman, et al., 1985). Thus, SERVQUAL is developed from a modification of ten dimensions to five principal dimensions customers, which are tangibles, reliability, responsiveness, assurance and empathy (Parasuraman, et al., 1990). The instrument in SERVQUAL is summarized in five dimensions called service quality model (The Gaps Models). Service Quality Model is a model that can analyze the gap between two main variables, the services expected by the customers (expectation) and services they

receive (perception) (fig.1)

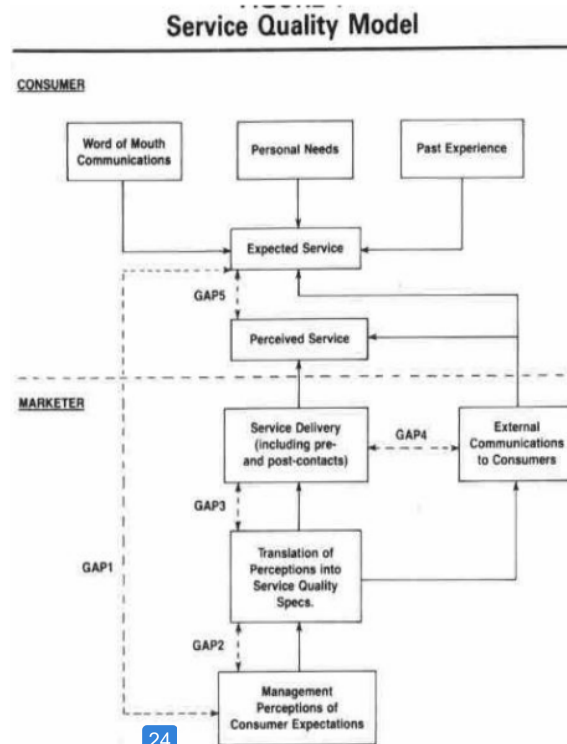


Figure 1. Service Quality Model (Parasuraman, et al., 1985)

Fuzzy

Generally, the fuzzy set is an extension of the crisp set, the set that divides a group of individuals into two categories, namely members and non-members (Rose, et al., 2004). Fuzzy number is a special fuzzy set $F = \{(x, \mu_F(x)), x \in R\}$ where x is the value that lie on the line of real numbers. $R^1; -\infty < x < +\infty$ and μ_F is a continuous mapping of R^1 into the closed interval $[0, 1]$ (Chan, et al., 1999). Fuzzy number is used to describe non-precise numerical concepts. A triangular fuzzy number (TFN), expressed by $M = (a, b, c)$, where $a < b < c$, is a special fuzzy number and has the following type triangular membership function (Zadeh, 1965):

$$\mu_M(x) = \begin{cases} 0, & \text{if } x \leq a \\ (x-a)/(b-a), & \text{if } a < x \leq b \\ (c-x)/(c-b), & \text{if } b < x \leq c \\ 0, & \text{if } x \geq c \end{cases} \quad (1)$$

Methodology of Research

The methodology of this research is described as follows:

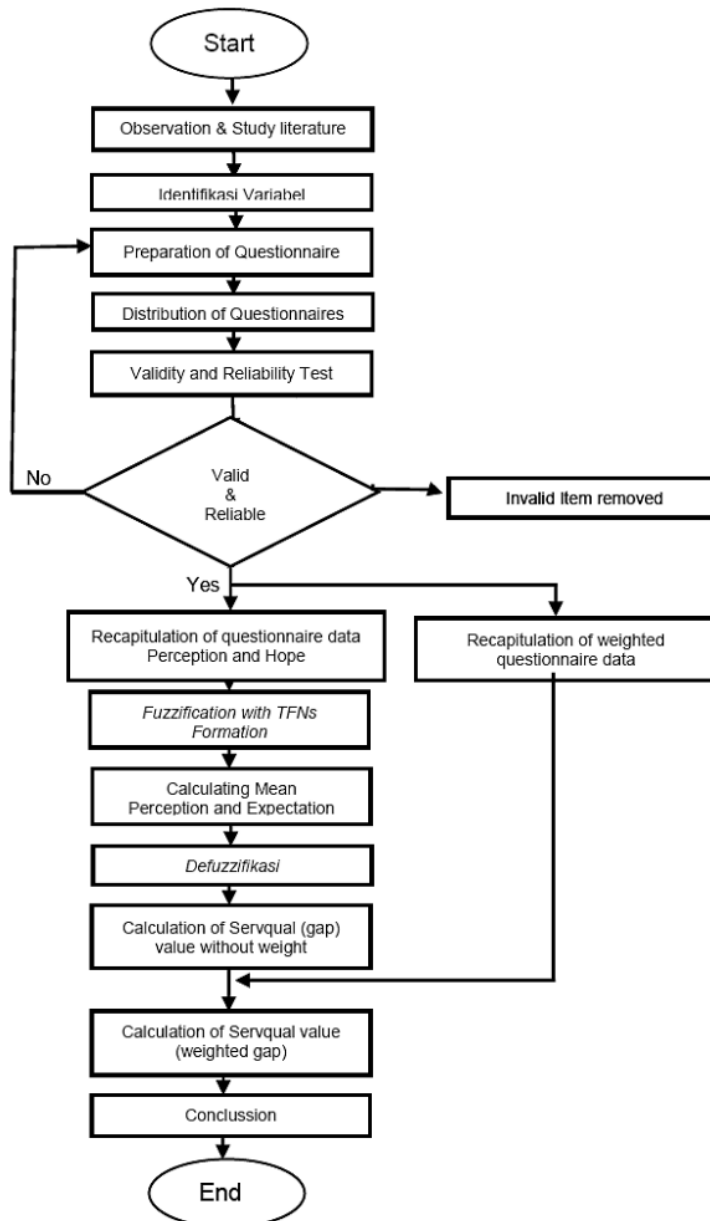


Figure 2. Flowchart of the research

The stages of this research were data collection, validity and reliability test, fuzzyfication, calculation of mean value, defuzzyfication, calculation of servqual value without weight, calculation of the weight of each variable, calculation of weighted servqual value. The stage of data collection in this study was performed to identify the attributes of health

services, preparation of questionnaire, and the distribute the questionnaire to the respondents. Respondents used in this research were patient or family of a patient in hospital "X", especially in inpatient units In this research, a total amount of 25 attributes of health services had been identified to be assessed by the respondents, such attributes were:

Table 1. Attribute of health services

Tangibles	(X ₁)	Convenient to Inpatient unit location
	(X ₂)	Cleanliness, tidiness and comfort of the bedroom
	(X ₃)	lighting and bedroom ventilation
	(X ₄)	completeness of bedroom facilities
	(X ₅)	Cleanliness of the bathroom and availability of clean water
	(X ₆)	The availability of medication required by the patient
	(X ₇)	Completeness, readiness and cleanliness of medical devices used
	(X ₈)	Neatness and cleanliness of the appearance of doctors and nurses
	(X ₉)	Taste and variety of food menu served
reliability	(X ₁₀)	Fast, accurate examination, treatment and treatment services
	(X ₁₁)	The patient's examination schedule is performed appropriately
	(X ₁₂)	The service procedure is not complicated
	(X ₁₃)	easy to contact the hospital staff
responsiveness	(X ₁₄)	The nurse's alertness when the patient needs help
	(X ₁₅)	The ability of doctors and nurses to resolve patient complaints
	(X ₁₆)	Doctors and nurses provide a clear and understandable information
assurance	(X ₁₇)	Attention to patients who need service
	(X ₁₈)	The availability of doctors and nurses at the time of patient need
	(X ₁₉)	The ability of doctors to analyze the disease
	(X ₂₀)	The accuracy of the medical team handles the patient
empathy	(X ₂₁)	Patience of nurses in caring for patients
	(X ₂₂)	Courtesy and hospitality of nurses and doctors
	(X ₂₃)	patient easy complaint submission
	(X ₂₄)	The ability of doctors and nurses to provide moral support to patients
	(X ₂₅)	Service to all patients regardless of social status

RESULT AND DISCUSSION

Result

In this study, the Likert scale was used as measuring tools in the questionnaire. Questionnaires were distributed to 98 respondents randomly at the inpatient unit of the hospital "X". The test validity and reliability of the results of the

questionnaire were performed with SPSS 17.0 software.

Fuzzification of respondent's data (perception and expectation) was done by changing the result of respondent appraisal (in Likert scale) to form fuzzy number with formation TFN_s (Triangular Fuzzy Number).

Table 2. Fuzzyfication perception for attributes X₁

Respondent	Atribut X1				Respondent	Atribut X1				Respondent	Atribut X1			
	Nilai	Fuzzy				Nilai	Fuzzy				Nilai	Fuzzy		
		Low	Crisp	Upp			Low	Crisp	Upp			Low	Crisp	Upp
1	3	2	3	4	34	4	3	4	5	67	2	1	2	3
2	3	2	3	4	35	4	3	4	5	68	4	3	4	5
3	3	2	3	4	36	3	2	3	4	69	4	3	4	5
4	3	2	3	4	37	3	2	3	4	70	4	3	4	5
5	5	4	5	6	38	4	3	4	5	71	4	3	4	5
6	4	3	4	5	39	3	2	3	4	72	5	4	5	6
7	5	4	5	6	40	4	3	4	5	73	5	4	5	6
8	3	2	3	4	41	3	2	3	4	74	4	3	4	5
9	3	2	3	4	42	2	1	2	3	75	4	3	4	5
10	3	2	3	4	43	3	2	3	4	76	5	4	5	6
11	3	2	3	4	44	3	2	3	4	77	4	3	4	5
12	4	3	4	5	45	5	4	5	6	78	3	2	3	4
13	3	2	3	4	46	4	3	4	5	79	3	2	3	4
14	3	2	3	4	47	4	3	4	5	80	4	3	4	5
15	3	2	3	4	48	3	2	3	4	81	5	4	5	6
16	4	3	4	5	49	4	3	4	5	82	3	2	3	4
17	3	2	3	4	50	4	3	4	5	83	3	2	3	4
18	5	4	5	6	51	3	2	3	4	84	3	2	3	4
19	5	4	5	6	52	3	2	3	4	85	4	3	4	5
20	3	2	3	4	53	2	1	2	3	86	3	2	3	4
21	5	4	5	6	54	3	2	3	4	87	3	2	3	4
22	3	2	3	4	55	4	3	4	5	88	3	2	3	4
23	5	4	5	6	56	4	3	4	5	89	3	2	3	4
24	4	3	4	5	57	5	4	5	6	90	4	3	4	5
25	3	2	3	4	58	3	2	3	4	91	4	3	4	5
26	4	3	4	5	59	4	3	4	5	92	4	3	4	5
27	4	3	4	5	60	4	3	4	5	93	3	2	3	4
28	2	1	2	3	61	3	2	3	4	94	4	3	4	5
29	5	4	5	6	62	3	2	3	4	95	4	3	4	5
30	3	2	3	4	63	3	2	3	4	96	4	3	4	5
31	4	3	4	5	64	4	3	4	5	97	3	2	3	4
32	3	2	3	4	65	4	3	4	5	98	3	2	3	4
33	3	2	3	4	66	3	2	3	4					

After all the fuzzification results obtained in each attribute, then the average (perceptions and expectations of respondents) from each attribute was calculated, and the defuzzification stage was subsequently performed.

Table 3. Mean Perceptions of Respondents (Fuzzy) and Defuzzyfication

Attribute	Fuzzy			Defuzzyfication	Attribute	Fuzzy			Defuzzyfication
	Low	Crisp	Upp			Low	Crisp	Upp	
X ₁	2.59	3.59	4.59	3.50	X ₁₄	2.87	3.87	4.87	3.78
X ₂	2.58	3.58	4.58	3.49	X ₁₅	2.85	3.85	4.85	3.76
X ₃	2.82	3.82	4.82	3.73	X ₁₆	2.79	3.79	4.79	3.70
X ₄	2.60	3.60	4.60	3.51	X ₁₇	2.86	3.86	4.86	3.77
X ₅	2.31	3.31	4.31	3.20	X ₁₈	2.73	3.73	4.73	3.64
X ₆	2.70	3.70	4.70	3.61	X ₁₉	2.68	3.68	4.68	3.59
X ₇	2.65	3.65	4.65	3.56	X ₂₀	2.88	3.88	4.88	3.79
X ₈	2.97	3.97	4.97	3.88	X ₂₁	2.70	3.70	4.70	3.61
X ₉	2.39	3.39	4.39	3.29	X ₂₂	2.94	3.94	4.94	3.85
X ₁₀	2.64	3.64	4.64	3.55	X ₂₃	2.72	3.72	4.72	3.63
X ₁₁	2.68	3.68	4.68	3.59	X ₂₄	2.68	3.68	4.68	3.59
X ₁₂	2.62	3.62	4.62	3.53	X ₂₅	2.72	3.72	4.72	3.63
X ₁₃	2.59	3.59	4.59	3.50					

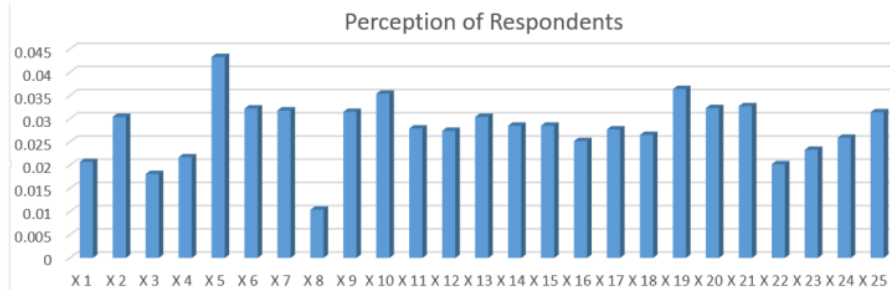


Figure 3. Perception of Respondents

Table 4. Mean Expectation of Respondents (Fuzzy) and Defuzzyfication

Attribute	Fuzzy			Defuzzyfication	Attribute	Fuzzy			Defuzzyfication
	Low	Crisp	Upp			Low	Crisp	Upp	
X ₁	3.16	4.16	5.16	4.08	X ₁₄	3.54	4.54	5.54	4.47
X ₂	3.34	4.34	5.34	4.26	X ₁₅	3.45	4.45	5.45	4.37
X ₃	3.29	4.29	5.29	4.21	X ₁₆	3.44	4.44	5.44	4.36
X ₄	3.17	4.17	5.17	4.09	X ₁₇	3.48	4.48	5.48	4.40
X ₅	3.40	4.40	5.40	4.32	X ₁₈	3.44	4.44	5.44	4.36
X ₆	3.47	4.47	5.47	4.39	X ₁₉	3.54	4.54	5.54	4.47
X ₇	3.41	4.41	5.41	4.33	X ₂₀	3.58	4.58	5.58	4.51
X ₈	3.23	4.23	5.23	4.15	X ₂₁	3.48	4.48	5.48	4.40
X ₉	3.27	4.27	5.27	4.19	X ₂₂	3.44	4.44	5.44	4.36
X ₁₀	3.45	4.45	5.45	4.37	X ₂₃	3.31	4.31	5.31	4.23
X ₁₁	3.36	4.36	5.36	4.28	X ₂₄	3.34	4.34	5.34	4.26
X ₁₂	3.32	4.32	5.32	4.24	X ₂₅	3.47	4.47	5.47	4.39
X ₁₃	3.35	4.35	5.35	4.27					

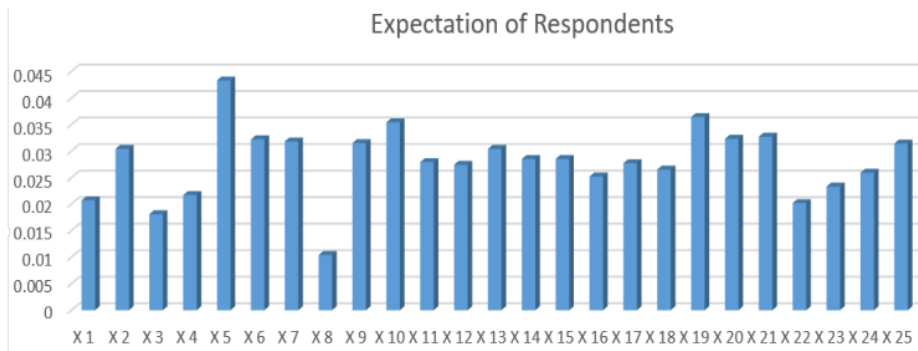


Figure 4. Expectation of Respondents

The next stage was the calculation of servqual value (gap) without weight (Table 5). $\text{Servqual Value (gap score)} = \text{Mean of Perception} - \text{Mean of Expectation}$

Table 5. Servqual value (gap score) without weight

attribute	Percep tion	Expec tation	Gap score	attribute	Percep tion	Expec tation	Gap score
X ₁	3.50	4.08	-0.59	X ₁₄	3.78	4.47	-0.69
X ₂	3.49	4.26	-0.77	X ₁₅	3.76	4.37	-0.61
X ₃	3.73	4.21	-0.48	X ₁₆	3.70	4.36	-0.67
X ₄	3.51	4.09	-0.59	X ₁₇	3.77	4.40	-0.64
X ₅	3.20	4.32	-1.12	X ₁₈	3.64	4.36	-0.72
X ₆	3.61	4.39	-0.78	X ₁₉	3.59	4.47	-0.88
X ₇	3.56	4.33	-0.77	X ₂₀	3.79	4.51	-0.72
X ₈	3.88	4.15	-0.27	X ₂₁	3.61	4.40	-0.79
X ₉	3.29	4.19	-0.90	X ₂₂	3.85	4.36	-0.51
X ₁₀	3.55	4.37	-0.82	X ₂₃	3.63	4.23	-0.59
X ₁₁	3.59	4.28	-0.69	X ₂₄	3.59	4.26	-0.67
X ₁₂	3.53	4.24	-0.71	X ₂₅	3.63	4.39	-0.76
X ₁₃	3.50	4.27	-0.77				

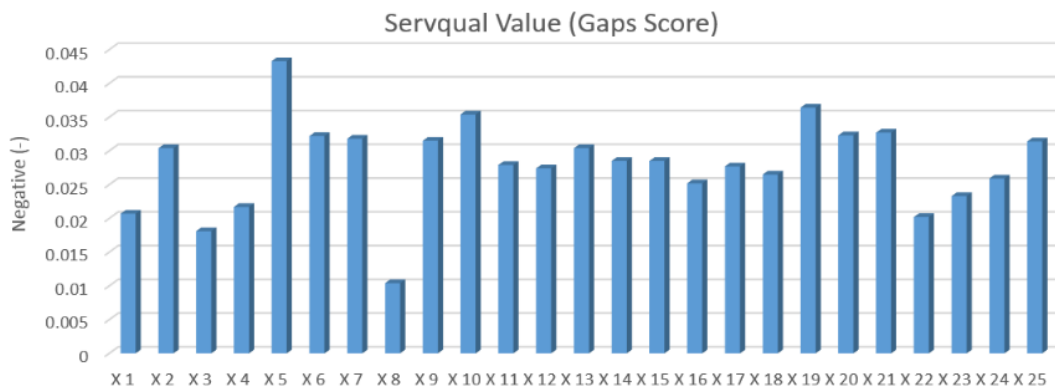


Figure 5. Servqual value (gap score) without weight

The next step after the obtained of servqual value without weight performed was the weighting of each attribute. In this study, the weighing of the attribute was performed by calculating the value average of each service quality attribute given by the respondent. Weighted questionnaires were

distributed to experts in the health sector, in this case the staff of hospital "X" as many as 10 respondents. Based on the distributed questionnaire data, the results of weighting each attribute were obtained as follows (Table 6):

Table 6. Weight value of attribute

No	Attribute	Weight	No	Attribute	Weight
1	X ₁	0.0350	14	X ₁₄	0.0413
2	X ₂	0.0395	15	X ₁₅	0.0413
3	X ₃	0.0377	16	X ₁₆	0.0413
4	X ₄	0.0368	17	X ₁₇	0.0413
5	X ₅	0.0386	18	X ₁₈	0.0422
6	X ₆	0.0413	19	X ₁₉	0.0413
7	X ₇	0.0413	20	X ₂₀	0.0449
8	X ₈	0.0386	21	X ₂₁	0.0413
9	X ₉	0.0350	22	X ₂₂	0.0395
10	X ₁₀	0.0431	23	X ₂₃	0.0395
11	X ₁₁	0.0404	24	X ₂₄	0.0386
12	X ₁₂	0.0386	25	X ₂₅	0.0413
13	X ₁₃	0.0395			

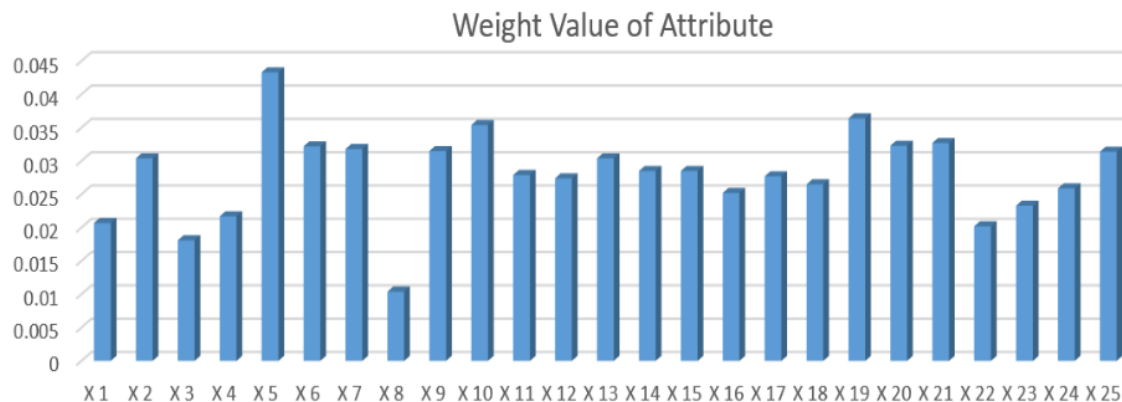


Figure 6. Weight value of attribute

After the result of weighting each attribute were obtained, servqual weighted value was subsequently counted by

multiplying servqual value without weight with weight value of each attribute (Table.7)

Table 7. Result of final Servqual value (gap score)

No	Attribute	Servqual without weight	Weight	Gap score	No	Attribute	Servqual without weight	Weight	Gap score
1	X ₁	-0.59	0.0350	-0.0207	14	X ₁₄	-0.69	0.0413	-0.0285
2	X ₂	-0.77	0.0395	-0.0304	15	X ₁₅	-0.61	0.0413	-0.0285
3	X ₃	-0.48	0.0377	-0.0181	16	X ₁₆	-0.67	0.0413	-0.0252
4	X ₄	-0.59	0.0368	-0.0217	17	X ₁₇	-0.64	0.0413	-0.0277
5	X ₅	-1.12	0.0386	-0.0433	18	X ₁₈	-0.72	0.0422	-0.0265
6	X ₆	-0.78	0.0413	-0.0322	19	X ₁₉	-0.88	0.0413	-0.0364
7	X ₇	-0.77	0.0413	-0.0318	20	X ₂₀	-0.72	0.0449	-0.0323
8	X ₈	-0.27	0.0386	-0.0104	21	X ₂₁	-0.79	0.0413	-0.0327
9	X ₉	-0.90	0.0350	-0.0315	22	X ₂₂	-0.51	0.0395	-0.0202
10	X ₁₀	-0.82	0.0431	-0.0354	23	X ₂₃	-0.59	0.0395	-0.0233
11	X ₁₁	-0.69	0.0404	-0.0279	24	X ₂₄	-0.67	0.0386	-0.0259
12	X ₁₂	-0.71	0.0386	-0.0274	25	X ₂₅	-0.76	0.0413	-0.0314
13	X ₁₃	-0.77	0.0395	-0.0304					

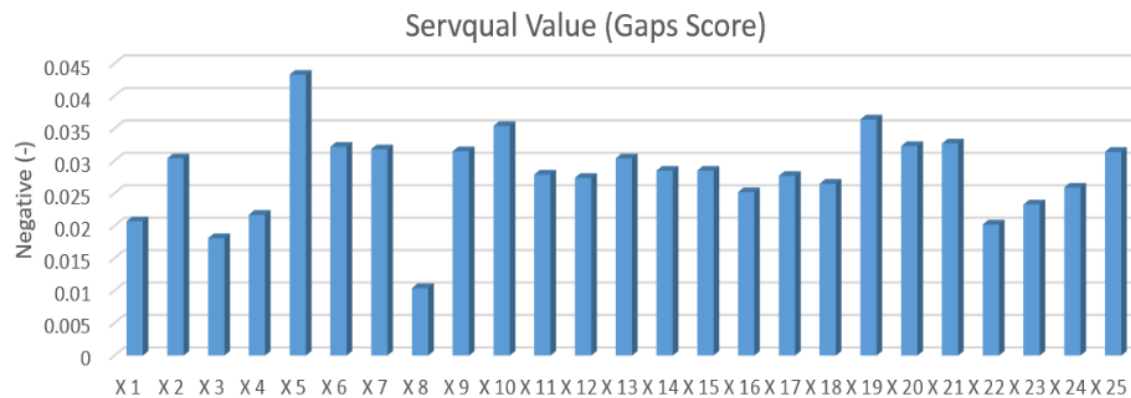


Figure 7. Final of Servqual value (gap score)

Discussion

41

The respondent's perception value indicated the level of service quality received by the patient during the use of health services at hospital "X". Based on the average value of respondent perception, attribute X₅ (Cleanliness of the bathroom and availability of clean water) had the lowest value, while the attribute X₈ (Neatness and cleanliness of the appearance of doctors and nurses) had the highest value. The expectation value of the respondent showed the respondent's willingness to the quality of service that should be given by hospital "X". The highest expectation value was the attribute of doctors' ability to analyze the disease (X₁₉). While the smallest expectation value attribute X₁ (Convenient to Inpatient unit location).

The analysis of servqual without weight was performed to find out how big the gap between perception and expectation of respondent to health service in hospital "X". Based on the results of this calculation, the attribute X₅ (Cleanliness of the bathroom and availability of clean water) had the largest gap, this showed the biggest gap between the perception and expectations of respondents to this attribute. While the smallest gap value was the attribute of Neatness and cleanliness of the appearance of doctors and nurses (X₈).

From the weighting of each attribute by the hospital management, the highest value of weight on attribute X₁₉ (The ability of doctors to analyze the disease) was obtained. While the lowest weight value was in the Convenient to Inpatient unit location (X₁) attribute. In the final result, a weighted servqual

value with the highest gap was obtained in the attribute of Cleanliness of the bathroom and availability of clean water (X_5) with a score of -0,0433, The availability of doctors and nurses at the time of patient need (X_{18}) with a score of -0,0364, and attribute of Fast, accurate examination, treatment and treatment services (X_{10}) with a score of -0,0354. this indicated that these attributes should be a prioritized to improve service quality.

CONCLUSION

Based on the results and discussion above, the policy strategy that can be taken by hospital management to improve the quality of service was prioritizing service quality improvement, the first on attribute X_5 (Cleanliness of the bathroom and availability of clean water) with a gap score of -0,0433. The second on attribute X_{18} (The availability of doctors and nurses at the time of patient need) with a gap score of -0,0364 and the third on attribute X_{10} (Fast, accurate examination, treatment and treatment services) with a gap score of -0,0354. Attributes these services assessed by customers was the least quality.

REFERENCES

- [1] Amin, M. & Nasharuddin, S. Z., 2013. Hospital Service Quality and its Effect on Patient Satisfaction and Behavioural Intention. *Clinical Governance: An International Journal*, Volume 18 No 3, pp. 238-254.
- [2] Anderson, E. W. & Mittal, V., 2000. Strengthening the satisfaction - profit chain. *Journal of Service Research*, Volume 3 No 2, pp. 107-120.
- [3] Berry, L. L. & Mate, K. S., 2016. Essentials for improving service quality in cancer care. *Healthcare*, Volume 4, pp. 312-316.
- [4] Arwana, T. K., Bashir, D. M. & Mohsin, M., 2013. Impact of Service Quality on Customers' Satisfaction. *International Journal of Scientific and Research Publications*, 3(5).
- [5] Chakraborty, D. R. & Majumdar, A., 2011. Measuring Consumer Satisfaction in Healthcare Sector: The Applicability of Servqual. *Journal of Arts, Science & Commerce*, II(4), p. 149.
- [6] Dave, D. D. R. & Dave, R., 2014. A study on Service quality and customer satisfaction of selected Private hospitals of Vadodara City. *Pacific Business Review International*, 3(3).
- [7] Duffy, J. et al., 2001. The Dimensions of Service Quality for Hospital. *Healthcare Management Review*, Volume 26, pp. 47-59.
- [8] James, J. & Kang, G.-D., 2004. Service quality dimensions: an examination of Gronroos's service quality model. *Managing Service Quality*, Volume 14, pp. 266-277.
- [9] Kalaja, R., Myshketa, R. & Scalera, F., 2016. Service quality assessment in health care sector: the case of Durres public hospital. *Procedia - Social and Behavioural Sciences*, Volume 235, pp. 557-565.
- [10] Lorin, V., Gheorghe, L. R. & Petrescu, C. M., 2013. The Assessment of Perceived Service Quality of Public Health Care Services in Romania Using the SERVQUAL Scale. *Procedia Economics and Finance*, Volume 6, pp. 573-585.
- [11] Lowrie, D. B., Li, M., Huang, C. Y. & Lu, X. C., 2015. Evaluating Patients Perception of Service Quality at Hospital in Nine Chinese Cities by use of the Servqual Scale. *Asian Pacific Journal of Tropical Biomedicine*, Volume 5 No 12, pp. 497-504.
- [12] Martins, A. L., Carvalho, J. C. d., Ramos, T. & Fael, J., 2015. Assessing Obstetrics Perceived Service Quality at a Public Hospital. *Procedia - Social and Behavioural Sciences*, Volume 181, pp. 414-422.
- [13] Mosadeghrad, A. M., 2014. Factors influencing healthcare service quality. *International Journal of Health Policy and Management*, Volume 3 No 2, pp. 77-81.
- [14] Munhurrun, P. R., Bhiwajee, S. D. L. & Naidoo, P., 2010. Service Quality in The Public Service. *International Journal of Management And Marketing Research*, Volume 23 no 1.
- [15] Parasuraman, A., Berry, L. L. & Duke, V. A. Z., 1990. Five Imperatives for Improving Service Quality. *Sloan Management Review*, Volume 31 no 4, pp. 29-38.
- [16] Parasuraman, A., Zeithaml, V. A. & Berry, L. L., 1985. A Conceptual Model of Service Quality and Its Implications for Future Research. *Journal of Marketing*, Volume 49, pp. 41-50.
- [17] Parasuraman, A., Zeithaml, V. A. & Berry, L. L., 1988. SERVQUAL: A Multiple-Item Scale for Measuring Consumer Perceptions of Service Quality. *Journal of Marketing*, Volume 64 No 1.
- [18] Punnakitikashem, P., Buavaraporn, N., Maluesri, P. & Leelartapin, K., 2012. *Health Care Service Quality: Case Example of a Hospital with Lean Implementation*. Chicago, POM Journal.
- [19] Rafidah, A., Nurulhuda, A. & Suhaila, Y., 2016. A Comparative Study of Service Quality on Patient Satisfaction Between Public Hospital in Johor Bahru. *REAJournal of Agriculture*, 1(2).
- [20] Yarimoglu, E. K., 2014. A Review on Dimensions of Service Quality Models. *Journal of Marketing Management*, Volume 26, pp. 79-93.
- [21] Yousapronpaiboon, K., 2014. SERVQUAL: Measuring higher education service quality in Thailand. *Procedia - Social and Behavioural Sciences*, Volume 116, pp. 1098-1095.
- [22] Zadeh, L. A., 1965. Fuzzy Sets. *Information and Control*, Volume 8, pp. 338-353.
- [23] Zaim, H., Bayyurt, N. & Zaim, S., 2010. Service Quality And Determinants Of Customer Satisfaction In Hospitals: Turkish Experience. *International Business & Economics Research Journal*, Volume 9 No 5.

Similarity Analysis of Healthcare Services Quality in Hospital "X" using Servqual - Fuzzy Method

ORIGINALITY REPORT

23%

SIMILARITY INDEX

PRIMARY SOURCES

- 1 Meghanan Bhairu Mutgekar, Pradip C. Bhaskar. "Analysis of DCT and FAST DCT using soft core processor", 2019 3rd International Conference on Trends in Electronics and Informatics (ICOEI), 2019 210 words — 4%

Crossref
- 2 Gyan Prakash. "Understanding service quality: insights from the literature", Journal of Advances in Management Research, 2019 58 words — 1%

Crossref
- 3 Rupal Khambhati, Hiren Patel, Satendra Kumar. "Construction and validation of public healthcare service quality model - an empirical study of Indian public healthcare facilities in digital era", International Journal of Public Sector Performance Management, 2020 50 words — 1%

Crossref
- 4 Sema Behdioğlu, Eylem Acar, Hasan Arda Burhan. "Evaluating service quality by fuzzy SERVQUAL: a case study in a physiotherapy and rehabilitation hospital", Total Quality Management & Business Excellence, 2017 46 words — 1%

Crossref
- 5 Ranjit Kumar Dehury, Janmejaya Samal, Shawnn Coutinho, Parthsarathi Dehury. "How Does the Largely Unregulated Private Health Sector Impact the Indian Mass?", Journal of Health Management, 2019 43 words — 1%

Crossref
- 6 Ruenruoy, Ratchada. "Electronic Word-of-Mouth (eWom): Examining the Relationship between Factors 42 words — 1%

Influencing eWom Activities and Passengers' Purchasing Involvement in the Context of Aviation", Florida Institute of Technology, 2020

ProQuest

-
- 7 Alka Thapa, Ramesh Raj Ghimire. "Service quality perception and patient satisfaction: evidence from private hospitals in Kathmandu", International Research Journal of Management Science, 2017 36 words — 1%
Crossref
-
- 8 Evangelos Psomas. "Determining the impact of service quality on citizens' satisfaction and the role of citizens' demographics. The case of the Greek citizen's service centers", The TQM Journal, 2020 36 words — 1%
Crossref
-
- 9 Samuel Famiyeh, Disraeli Asante-Darko, Amoako Kwarteng. "Service quality, customer satisfaction, and loyalty in the banking sector", International Journal of Quality & Reliability Management, 2018 33 words — 1%
Crossref
-
- 10 Nurul Izzatty Ismail, Nor Hazana Abdullah. "A Systematic Review of Patient Satisfaction on Health Information Exchange in Malaysian Public Healthcare Organizations", Journal of Physics: Conference Series, 2018 33 words — 1%
Crossref
-
- 11 Swapnarag Swain. "Do patients really perceive better quality of service in private hospitals than public hospitals in India?", Benchmarking: An International Journal, 2019 29 words — 1%
Crossref
-
- 12 Ingy Shafei, Jan Walburg, Ahmed Taher. "Verifying alternative measures of healthcare service quality", International Journal of Health Care Quality Assurance, 2019 27 words — 1%
Crossref
-
- 13 Zeki Ayağ. "A fuzzy AHP-based simulation approach to concept evaluation in a NPD environment", IIE Transactions, 2005 27 words — 1%
Crossref

14 Saad Ahmed Javed, Sifeng Liu, Amin Mahmoudi, Muhammad Nawaz. "Patients' satisfaction and public and private sectors' health care service quality in Pakistan: Application of grey decision analysis approaches", The International Journal of Health Planning and Management, 2019 25 words — 1%

Crossref

15 Tamwatin, Utid, Jirasek Trimetsoontorn, and Wannong Fongsuwan. "Ensuring customer satisfaction through service quality and image management in the hospitality industry: a conceptual perspective", J for Global Business Advancement, 2015. 25 words — 1%

Crossref

16 Vinaysing Ramessur, Dinesh Kumar Hurreeram, Kaylasson Maistry. "Service quality framework for clinical laboratories", International Journal of Health Care Quality Assurance, 2015 24 words — < 1%

Crossref

17 Raghav Upadhyai, Neha Upadhyai, Arvind Kumar Jain, Hiranmoy Roy, Vimal Pant. "Health care service quality: a journey so far", Benchmarking: An International Journal, 2020 24 words — < 1%

Crossref

18 Arsalan Gharaveis, Mahshad Kazem-Zadeh. "The Role of Environmental Design in Cancer Prevention, Diagnosis, Treatment, and Survivorship: A Systematic Literature Review", HERD: Health Environments Research & Design Journal, 2018 24 words — < 1%

Crossref

19 Kanina, Ahmad Samer. "Saudi Car Dealerships' Service Quality, Customer Satisfaction, and Behavioral Intentions: A Quantitative Correlational Study.", University of Phoenix, 2020 24 words — < 1%

ProQuest

20 "Human Interaction and Emerging Technologies", Springer Science and Business Media LLC, 2020 23 words — < 1%

Crossref

21	Inga Lapina, Renāte Roga, Peeter Mürsepp. "Quality of higher education", International Journal of Quality and Service Sciences, 2016 Crossref	21 words — < 1%
22	Gi-Du Kang, Jeffrey James. "Service quality dimensions: an examination of Grönroos's service quality model", Managing Service Quality: An International Journal, 2004 Crossref	21 words — < 1%
23	Publications	19 words — < 1%
24	Makshindra Thapa. "SERVQUAL Gap Analysis of Nepalese Commercial Banks", The Batuk, 2020 Crossref	19 words — < 1%
25	Allen Monge, Jaime. "Modelling Satisfaction with Public Transport.", Pontificia Universidad Catolica de Chile (Chile), 2020 ProQuest	18 words — < 1%
26	Annamdevula Subrahmanyam, Bellamkonda Raja Shekhar. "Where do you find loyalty in the contemporary university scene?", Journal of Applied Research in Higher Education, 2017 Crossref	17 words — < 1%
27	Febri Endra Budi Setyawan, Stefanus Supriyanto, Feny Tunjungsari, Wa Ode Nurlaily Hanifaty, Retno Lestari. "Medical staff services quality to patients satisfaction based on SERVQUAL dimensions", International Journal of Public Health Science (IJPHS), 2019 Crossref	17 words — < 1%
28	Robert Johnston. "Chapter 2 Insights into Service Excellence", Springer Science and Business Media LLC, 2007 Crossref	16 words — < 1%
29	Angelos Pantouvakis, Constantinos Chlomoudis,	16 words — < 1%

Athanassios Dimas. "Testing the SERVQUAL scale in the passenger port industry: a confirmatory study", *Maritime Policy & Management*, 2008

Crossref

30 Muhammad Shoaib Farooq, Maimoona Salam. "Cleaner production practices at company level enhance the desire of employees to have a significant positive impact on society through work", *Journal of Cleaner Production*, 2021

Crossref

31 Khanchitpol Yousapronpaiboon, William C. Johnson. "Measuring hospital out-patient service quality in Thailand", *Leadership in Health Services*, 2013

Crossref

32 Mohammad Ali Beheshtinia, Sedighe Omidi. "A hybrid MCDM approach for performance evaluation in the banking industry", *Kybernetes*, 2017

Crossref

33 Panchapakesan Padma, Chandrasekharan Rajendran, Prakash Sai Lokachari. "Service quality and its impact on customer satisfaction in Indian hospitals", *Benchmarking: An International Journal*, 2010

Crossref

34 Sik Sumaedi, Medi Yarmen, I. Gede Mahatma Yuda Bakti. "Healthcare service quality model", *International Journal of Productivity and Performance Management*, 2016

Crossref

35 Muslim Amin, Siti Zahora Nasharuddin. "Hospital service quality and its effects on patient satisfaction and behavioural intention", *Clinical Governance: An International Journal*, 2013

Crossref

36 Ana Lúcia Martins, José Crespo de Carvalho, Tânia Ramos, Joana Fael. "Assessing Obstetrics Perceived Service Quality at a Public Hospital", *Procedia - Social*

-
- 37** Koshak, Hussain Khalil. "The Relationship between Service Quality and Customer Satisfaction in Men's Fitness Centers in Saudi Arabia.", Concordia University Chicago, 2020 10 words — < 1%
ProQuest
-
- 38** Dadzie, Joyce. "An Evaluation of Customer Satisfaction Dimensions in the Ghanaian Banking Industry.", Walden University, 2018 9 words — < 1%
ProQuest
-
- 39** Muhamad Yunus Abdullah, Prabowo Prabowo, Bambang Sudarmanta. "Experiment Analysis Degree of Superheating Mass Flow Rate on the Evaporator as a Source of Energy Generation", International Review of Mechanical Engineering (IREME), 2020 9 words — < 1%
Crossref
-
- 40** Ahmad Ameryoun, Seyedvahid Najafi, Bayram Nejati-Zarnaqi, Seyed Omid Khalilifar, Mahdi Ajam, Ahmad Ansarimoghadam. "Factor selection for service quality evaluation: a hospital case study", International Journal of Health Care Quality Assurance, 2017 8 words — < 1%
Crossref
-
- 41** Kim Piew Lai, Yuen Yee Yen, Chong Siong Choy. "The effects of service quality and perceived price on revisit intention of patients: the Malaysian context", International Journal of Quality and Service Sciences, 2020 8 words — < 1%
Crossref
-
- 42** Torkula, Thomas Terlumun. "Challenges in Quality Care Delivery in Tertiary Health Facilities in North-Central Nigeria", Walden University, 2020 8 words — < 1%
ProQuest
-
- 43** Centurion, Erika Cinthya Leon-Ravinez. "Calidad en el Servicio del Autoservicio Mayorista en la Provincia de Lima.", Pontificia Universidad Catolica del Peru - CENTRUM Catolica (Peru), 2020 8 words — < 1%

EXCLUDE QUOTES OFF
EXCLUDE
BIBLIOGRAPHY OFF

EXCLUDE MATCHES OFF